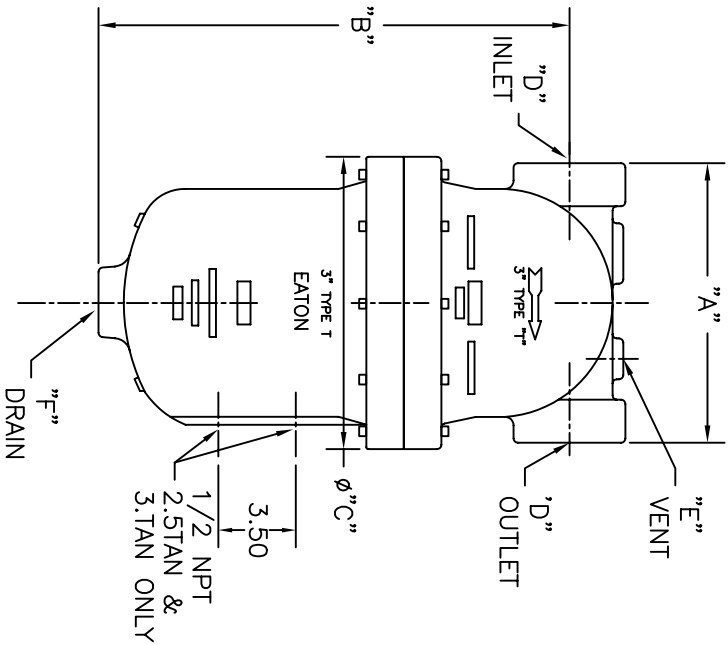


PIPE SIZE (NOMINAL) IN. MM	DIMENSIONS						DRY WEIGHT LBS KGS	PART NO.
	"A" IN. MM	"B" IN. MM	"C" IN. MM	"D" CONNECTION	"E" VENT	"F" DRAIN		
3/4 (20)	5.50 / 140	9.19 / 233	5.75 / 146	3/4" NPT	1/4" NPT	3/4" NPT	22 / 10	0.75TAN
1 (25)	6 / 152	9 / 229	6.75 / 171	1" NPT	1/4" NPT	1" NPT	25 / 11.4	1.TAN
1-1/4 (32)	6 / 152	9.13 / 232	7 / 178	1-1/4" NPT	1/4" NPT	1" NPT	28 / 12.7	1.25TAN
1-1/2 (40)	7.25 / 184	11.69 / 297	8.13 / 207	1-1/2" NPT	1/4" NPT	1" NPT	44 / 20	1.5TAN
2 (50)	8.13 / 206	13.69 / 348	8.50 / 216	2" NPT	1/4" NPT	1" NPT	47 / 21.3	2.TAN
2-1/2 (65)	9.38 / 238	14.38 / 365	10.00 / 254	2-1/2" NPT	1/4" NPT	1" NPT	89 / 40.4	2.5TAN
3 (80)	11 / 280	15.94 / 405	11.38 / 289	3" NPT	1/4" NPT	1-1/4" NPT	90 / 41	3.TAN



NOTES:

1. UNITS ARE TO BE DESIGNED, FABRICATED & CODE STAMPED (IF REQUIRED) IN ACCORDANCE WITH ASME B & PV CODE, SECTION VIII, DIVISION 1 IN COMPLIANCE TO CURRENT PUBLISHED ADDENDA.
2. ALL DIMENSIONS ARE IN INCHES [MM].

3. DESIGN DATA:

DESIGN PRESSURE- 250 PSIG [17.2 BARS]
 DESIGN TEMPERATURE- 450° F [232.2 °C]
 MIN. DESIGN METAL TEMP.- -20° F @ 250 PSIG
 [-28.9° C @ 17.2 BARS]
 HYDROTEST PRESSURE- 500 PSIG [34.5 BARS]
 CORROSION ALLOWANCE- 0 INCHES

4. MATERIAL: CAST IRON, SA-278 CLASS 30

CERTIFIED FOR:
 P.O. NO.:
 S.O. NO.:
 QUOTE NO.:
 TAG NO.:

ELECTRONIC FILE NAME: SD-TAN.DWG
 REF. ECR D507 DATE 10/18/05

UNAUTHORIZED USE, MANUFACTURE OR REPRODUCTION IN WHOLE OR IN PART IS PROHIBITED. DRAWING, DESIGN AND OTHER DISCLOSURES PROPERTY OF EATON FILTRATION, LLC

		EATON FILTRATION, LLC 900 FAIRMOUNT AVENUE, ELIZABETH, NEW JERSEY 07207	
		NAME TYPE "T" GAS LIQUID SEPARATOR THREADED LINE CONNECTIONS CAST IRON	
DRAWN VA SIZE DWG NO A	DATE 11/25/03 CERT. FM	DATE 11/25/03	REV F

SD-TAN