

PART NO.	DIMENSIONS						WEIGHT	
	"A" NOM. IN. MM	"B" IN. MM	"C" IN. MM	"D" IN. MM	"E" IN. MM	"F" IN. MM	LBS	KGS
3.31LSTFN	3 / 75	25.00 / 635	9.00 / 229	7.63 / 194	6.75 / 171	0.81 / 21	115 / 52.2	
4.31LSTFN	4 / 100	27.25 / 692	9.88 / 251	9.63 / 245	6.75 / 171	0.81 / 21	160 / 72.6	

NOTES:

1. ALL DIMENSIONS ARE IN INCHES [MM].

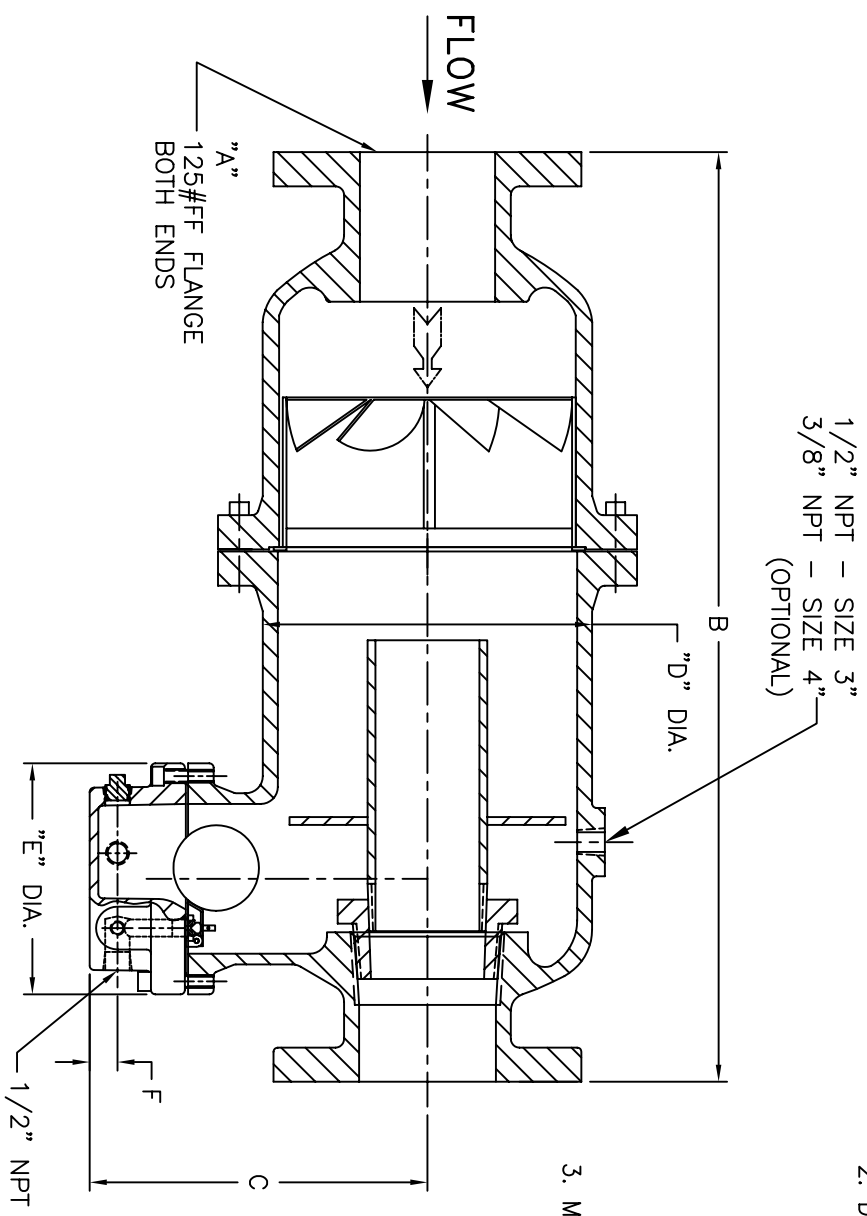
2. DESIGN DATA:

DESIGN PRESSURE- 150 PSIG [10.3 BARS]  
DESIGN TEMPERATURE- 353° F [178.3 °C]

DESIGN PRESSURE- 125 PSIG [8.62 BARS]  
DESIGN TEMPERATURE- 450° F [232.2 °C]

MIN. DESIGN METAL TEMP.- -20° F @ 150 PSIG  
[-28.9° C @ 10.3 BARS]

3. MATERIAL: BODY & COVER - CAST IRON, SA-278 CLASS 30  
INTERNALS - STAINLESS STEEL  
GASKET - NON-ASBESTOS



CERTIFIED FOR:  
P.O. NO.:  
S.O. NO.:  
QUOTE NO.:  
TAG NO.:

ELECTRONIC FILE NAME: SD31LSTFN.DWG  
REF. EOR D507 DATE 10/18/05

UNAUTHORIZED USE, MANUFACTURE OR REPRODUCTION IN WHOLE OR IN PART IS PROHIBITED. DRAWING, DESIGN AND OTHER DISCLOSURES PROPERTY OF EATON FILTRATION, LLC

		<b>EATON FILTRATION, LLC</b> 900 FAIRMOUNT AVENUE, ELIZABETH, NEW JERSEY 07207					
		NAME TYPE 31L-STF GAS / LIQUID 125#FF FLANGE SEPARATOR - TRAP SIZES 3" - 4" CAST IRON					
DRAWN	FM	DATE	6/24/04	CERT.	VAA	DATE	6/25/04
SIZE	DWG NO	SD31LSTFN		REV	B		