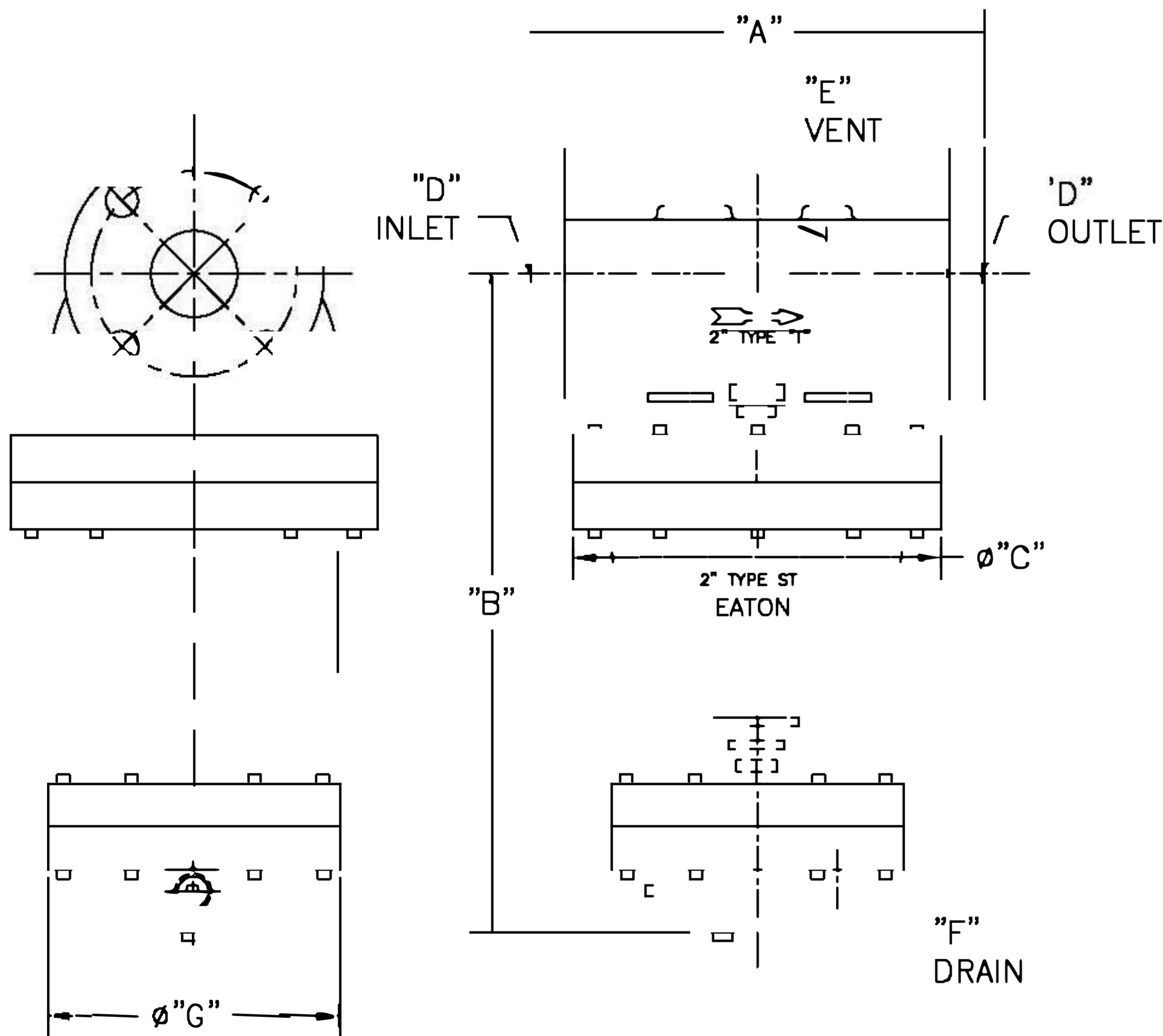


PIPE SIZE (NOMINAL) IN. MM	DIMENSIONS									DRY WEIGHT		PART NO.		
	"A"		"B"		"C"		"D"	"E"	"F"	"G"			LBS	KGS
	IN.	MM	IN.	MM	IN.	MM	CONNECTION	VENT	DRAIN	IN.	MM			
2 (50)	10.50	267	15.31	389	8.50	216	2" ANSI CLASS 125 FF	1/4" NPT	3/4" NPT	6.75	171	51	23.2	2.STFN
3 (80)	14	356	20.44	519	11.38	289	3" ANSI CLASS 125 FF	1/4" NPT	3/4" NPT	6.75	171	100	45.5	3.STFN
4 (100)	15.88	403	23.50	597	14.06	357	4" ANSI CLASS 125 FF	1/4" NPT	3/4" NPT	6.75	171	225	102.3	4.STN
5 (125)	18.38	467	31.00	787	17.00	432	5" ANSI CLASS 125 FF	1/4" NPT	3/4" NPT	6.75	171	390	176.9	5.STN

NOTES:

- UNITS ARE TO BE DESIGNED, FABRICATED & CODE STAMPED (IF REQUIRED) IN ACCORDANCE WITH ASME B & PV CODE, SECTION VIII, DIVISION 1 IN COMPLIANCE TO CURRENT PUBLISHED ADDENDA.
- ALL DIMENSIONS ARE IN INCHES [MM].
- DESIGN DATA:
 DESIGN PRESSURE & TEMPERATURE— 150 PSIG [10.3 BARS] @ 353° F [178.3° C]
 125 PSIG [8.62 BARS] @ 450° F [232.2° C]
 MIN. DESIGN METAL TEMP.— -20° F @ 150 PSIG
 [-28.9° C @ 10.3 BARS]
 HYDROTEST PRESSURE— 300 PSIG [20.7 BARS]
 CORROSION ALLOWANCE— 0 INCHES
- MATERIAL: CAST IRON, SA-278 CLASS 30



CERTIFIED FOR:
 P.O. NO.:
 S.O. NO.:
 QUOTE NO.:
 TAG NO.:

NAME TYPE "ST" GAS LIQUID SEPARATOR
 FLANGED LINE CONNECTIONS
 CAST IRON

UNAUTHORIZED USE, MANUFACTURE OR REPRODUCTION IN WHOLE OR IN PART IS PROHIBITED.

DRAWN VA DATE 01/20/04 CERT. FM DATE 01/20/04

SIZE A DWG NO

SD-STFN

REV E

ELECTRONIC FILE NAME: SD-STFN.DWG
 REF. ECR D507 DATE 10/18/05