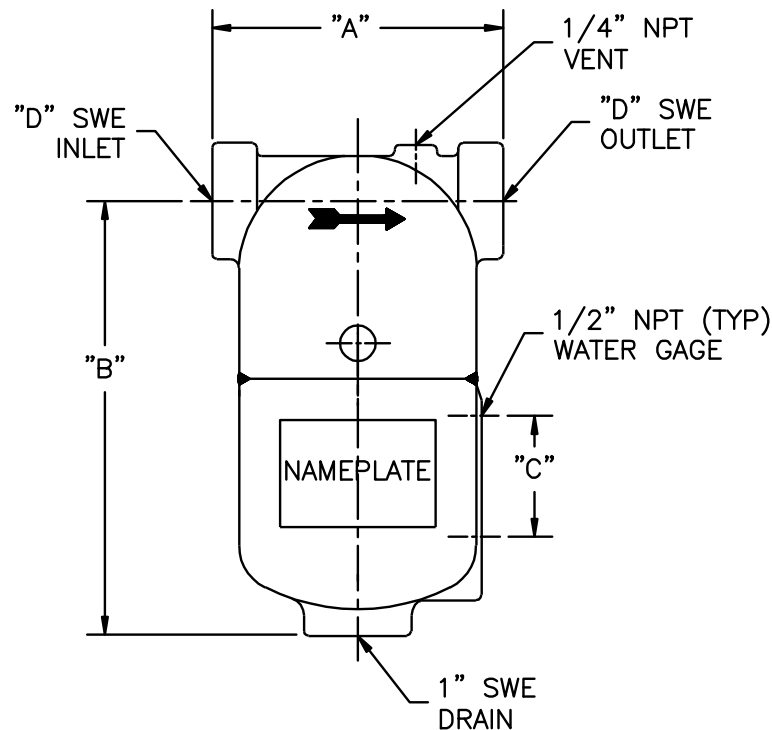


DIMENSION TABLE						
PIPE SIZE	"A"	"B"	"C"	"D" SOCKETWELD	STANDARD PART NO.	CODE PART NO.
1	6.38	10.50	4.75	1	1TWC	1TWCU
1 1/4				1-1/4	1.25TWC	1.25TWCU
1 1/2	7.63	12.50		1-1/2	1.5TWC	1.5TWCU
2				2	2TWC	2TWCU

REV	DATE	CHANGE	ECR	BY	APP
A	12/3/04	NEW ISSUE	C788	FM	FJM
B	11/1/05	REVISED TITLE BLOCK	D507	FM	LH
C	5/3/12	1" SWE DRAIN WAS 1" NPT	0070148	FM	LH



#### NOTES:

1. UNITS ARE TO BE DESIGNED, FABRICATED & CODE STAMPED (IF REQUIRED) IN ACCORDANCE WITH ASME B & PV CODE, SECTION VIII, DIVISION 1 IN COMPLIANCE TO CURRENT PUBLISHED ADDENDA.
2. ALL DIMENSIONS ARE IN INCHES.
3. SHIPPING WEIGHT: 50 POUNDS.
4. DESIGN DATA:
 

DESIGN PRESSURE—	1000 PSIG
DESIGN TEMPERATURE—	650° F
MIN. DESIGN METAL TEMP.—	–20° F @ 1000 PSIG
HYDROTEST PRESSURE—	1300 PSIG
CORROSION ALLOWANCE—	0 INCHES
5. MATERIAL: CAST CARBON STEEL (SA-216 GR. WCB)

CUSTOMER:  
REG. NO.:  
P.O. NO.:  
TAG NO.:

**EATON**

**EATON FILTRATION, LLC**

900 FAIRMOUNT AVENUE, ELIZABETH, NEW JERSEY 07207

NAME **1"–2" TYPE "T" GAS/LIQUID  
SEPARATOR SWE CAST STEEL**

ELECTRONIC FILE NAME:  
SDT1000WC.DWG

TOLERANCES UNLESS OTHERWISE SPECIFIED  
PER ENGINEERING STANDARD ES- --

UNAUTHORIZED USE, MANUFACTURE OR  
REPRODUCTION IN WHOLE OR IN PART IS  
PROHIBITED. DRAWING, DESIGN AND  
OTHER DISCLOSURES PROPERTY OF  
EATON FILTRATION, LLC

DRAWN	FM	DATE	12/3/04	CHECKED	LH	DATE	12/3/04
APP	FJM	DATE	12/3/04	SCALE	NTS	ECR	C788
SIZE	DWG	SDT1000WC				REV	C
A	NO						