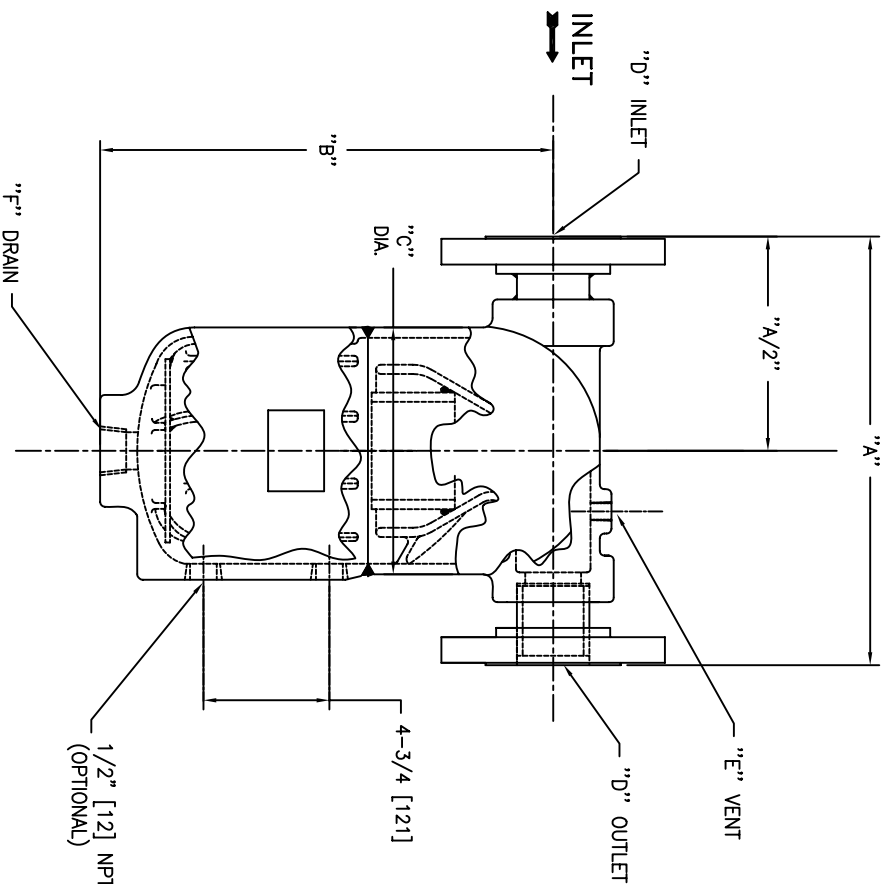


PIPE SIZE (NOMINAL) IN. MM	DIMENSIONS						DRY WEIGHT		PART NO.
	"A" IN. MM	"B" IN. MM	"C" IN. MM	"D" CONNECTION	"E" VENT	"F" DRAIN	LBS	KGS	
1 (25)	10.5 / 267	10.5 / 267	5.56 / 141	1 (25)	1/4" NPT	1" NPT	29 / 13		1T150C
1-1/4 (32)	10.5 / 267	10.5 / 267	5.56 / 141	1-1/4 (32)	1/4" NPT	1" NPT	30 / 13.6		1.25T150C
1-1/2 (40)	11.5 / 292	12.5 / 318	6.63 / 168	1-1/2 (40)	1/4" NPT	1" NPT	53 / 24		1.5T150C
2 (50)	11.5 / 292	12.5 / 318	6.63 / 168	2 (50)	1/4" NPT	1" NPT	57 / 25.8		2T150C

NOTES:

- UNITS ARE TO BE DESIGNED, FABRICATED & "U" OR "UM" STAMPED (IF REQ'D) IN ACCORDANCE WITH ASME B & PV CODE, SECTION VIII, DIVISION 1, IN COMPLIANCE TO CURRENT PUBLISHED ADDENDA.
- ALL DIMENSIONS ARE IN INCHES [MM].
- ALL BOLT HOLES ARE TO STRADDLE NATURAL CENTERLINES.
- DESIGN DATA:
 DESIGN PRESSURE- 150 PSIG [10.3 BARG]
 DESIGN TEMPERATURE- 450° F [232°C]
 MIN. DESIGN METAL TEMP.- -20° F @ 150 PSIG [-29° C @ 10.3 BARG]
 HYDROTEST PRESSURE- 195 PSIG [13.39 BARG]
 CORROSION ALLOWANCE- 0 INCHES
- MATERIAL: CARBON STEEL (CASTING DESIGN)



1/2" [12] NPT W.G. (2) PLACES (OPTIONAL)

CERTIFIED FOR -

REG. NO.: -
 P.O. NO.: -
 QUOTE NO.: -
 TAG NO.: -

EATON FILTRATION, LLC
 900 FARMOUNT AVENUE, ELIZABETH, NEW JERSEY 07207

NAME: TYPE "T" GAS/ LIQUID
 150# FLANGED CONNECTIONS
 CAST CARBON STEEL

DRAIN	LH	DATE	05/24/04	CERT.	FM	DATE	05/24/04
SIZE	DWG	SDT150CC				REV	B

ELECTRONIC FILE NAME: SDT150CC.DWG
 REF. ECR D507 DATE 11/1/05

UNAUTHORIZED USE, MANUFACTURE OR REPRODUCTION IN WHOLE OR IN PART IS PROHIBITED. DRAWING, DESIGN AND OTHER DISCLOSURES PROPERTY OF EATON FILTRATION, LLC