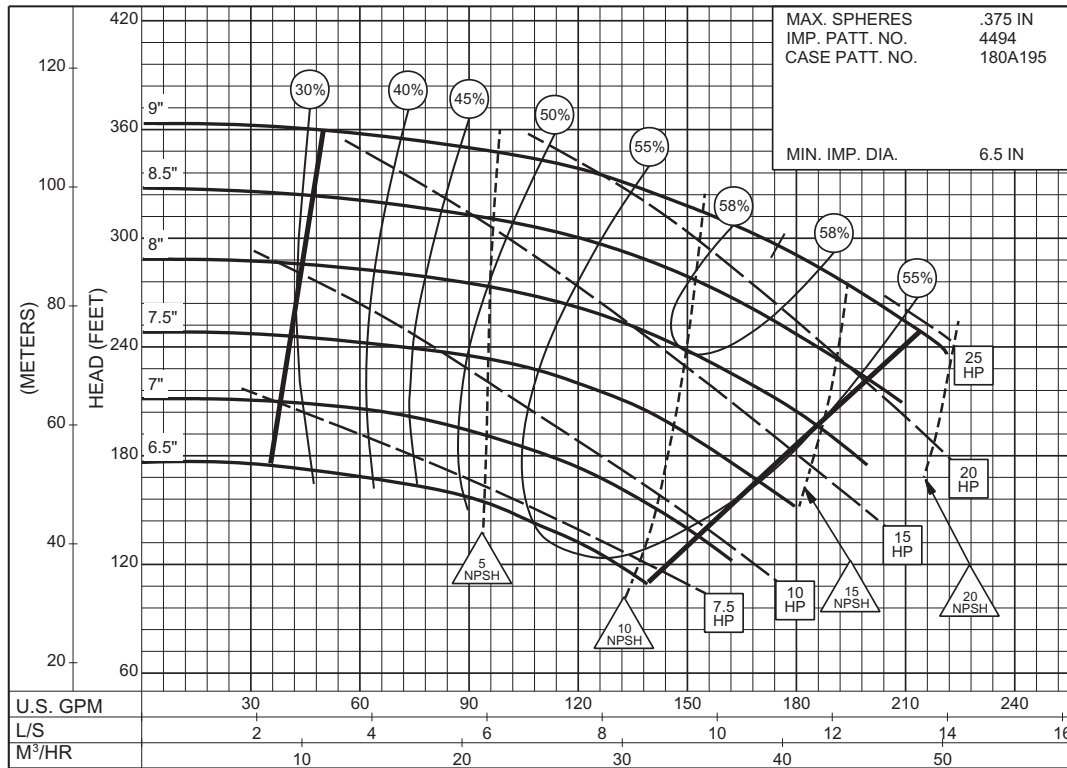


1-1/2 X 2 X 9C SERIES 340 OR 360

ENCLOSED IMPELLER

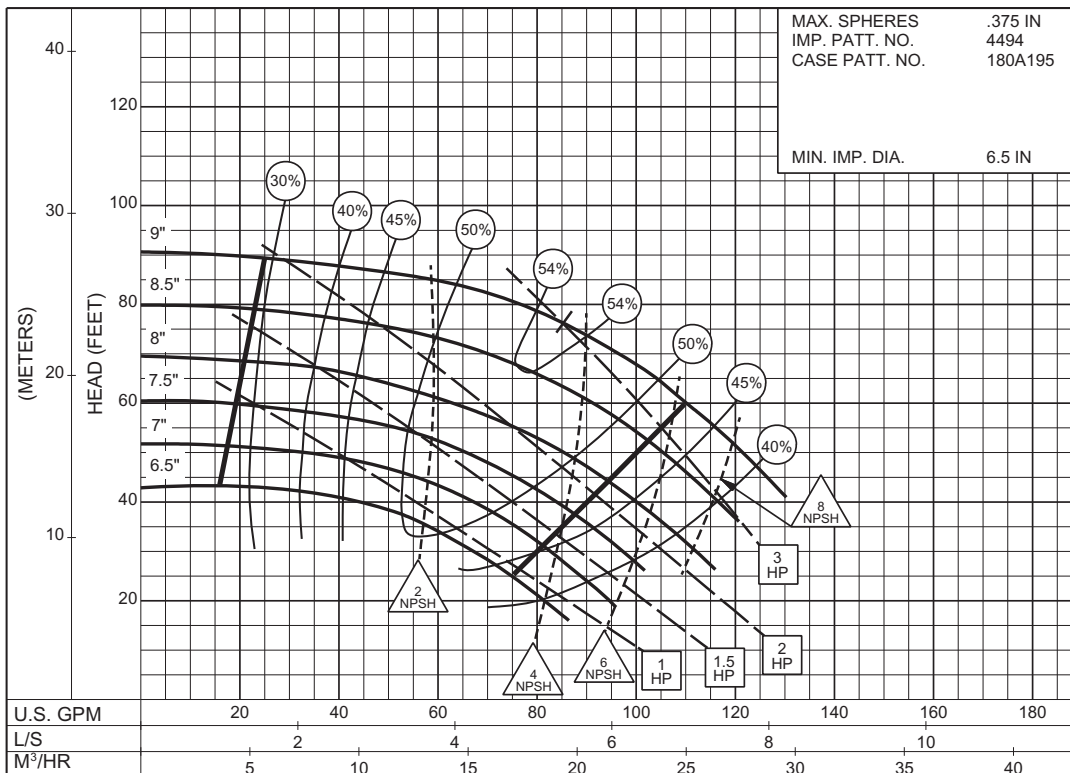
SIZE : 1-1/2x2x9C TYPE : 340/360 IMPELLER : Enclosed R. P. M. : 3500



3PC-116278

**3500
RPM**

SIZE : 1-1/2x2x9C TYPE : 340/360 IMPELLER : Enclosed R. P. M. : 1750



3PC-116279

**1750
RPM**